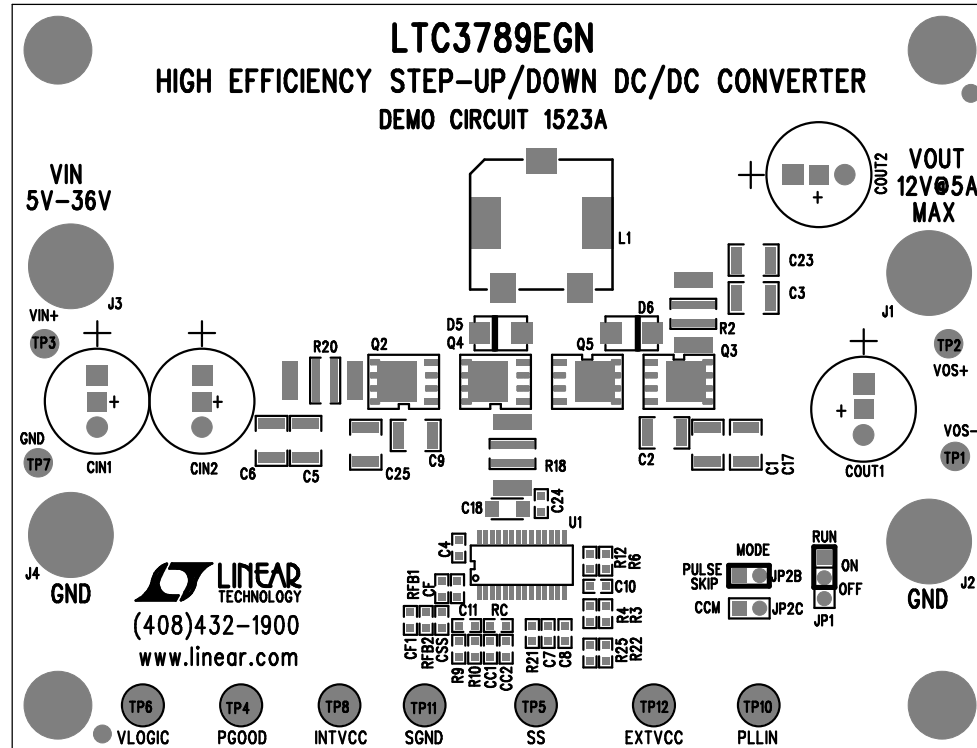
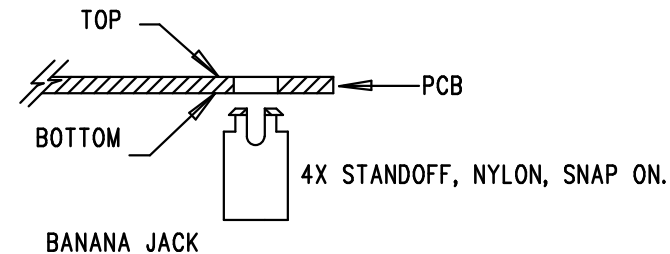


REVISION HISTORY				
ECO	REV	DESCRIPTION	APP. ENG.	DATE
-	3	PRODUCTION	TAGE B.	06-21-10

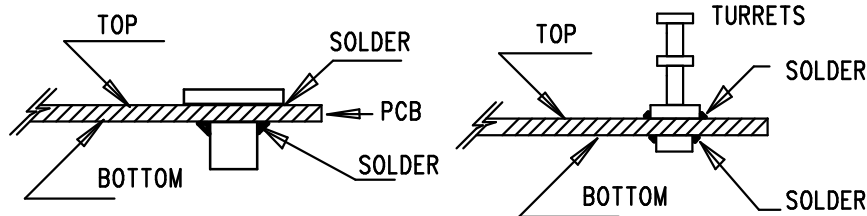
NOTES: UNLESS OTHERWISE SPECIFIED


1. WORKMANSHIP SHALL BE IN ACCORDANCE WITH IPC-A-610.
2. ASSEMBLY PROCESS SHALL INCLUDE: REFLOW SOLDER TOP SIDE SMD.
3. PARTS TO OMIT WILL BE SPECIFIED ON THE BILL OF MATERIALS. LOCATIONS OF OMITTED PARTS SHALL BE FREE OF SOLDER. MASK THE SOLDER STENCIL WHERE SMT PARTS ARE OMITTED.
4. INSTALL SHUNTS AS SHOWN ON ASSY DRAWING.
5. DEPANELIZE BOARDS AFTER ASSEMBLY AND ROUTE-OUT THE BREAKOUT TABS ON FOUR SIDES OF THE BOARD EDGE.
6. DO NOT APPLY ANY KIND OF ASSEMBLY STAMP OR QA STAMP TO ANY BOARD.
7. INSTALL 4 STANDOFFS AT 4 LOCATIONS AS SHOWN BELOW:



Silkscreen Top

LINEAR TECHNOLOGY
DC1523A-LTC3789EGN
HIGH EFFICIENCY
STEP-UP/DOWN DC/DC CONVERTER
DATE: 06-21-10



APPROVALS		 1630 MCCARTHY BLVD MILPITAS, CA 95035 PH: (408)432-1900 www.linear.com LTC CONFIDENTIAL- FOR CUSTOMER USE ONLY	
PCB DES.	AK		
APP ENG.	TAGE B.	TITLE: TOP ASSEMBLY DRAWING HIGH EFFICIENCY STEP-UP/DOWN DC/DC CONVERTER	
SIZE	IC NO.	LTC3789EGN DEMO CIRCUIT 1523A	
N/A	REV.	3	
SCALE = NONE		FILENAME: DC1523A-3.PCB	SHT 1 OF 3